

Neighborhood Newsletter

Almost Spring

2021

Volume 12, Number 3

INSIDE THIS ISSUE:

Boards/ Committees	2
Grass Class	3
Neighbors	4
St. Patrick's Day	8
Hearts and Holidays	9
Puns	10
Trash Etiquette	11
Clever truths	14
Upcoming birthdays	15
Wisdom	16
History Quiz	17
VOLC Movie Awards	19
Quilt Exhibit	22
Snow People	23
Coming soon...	24

Hang on - First day of Spring is March 20th!!!!



Barb Doto sent these stunning photos of Butchart Gardens, Victoria, BC, Canada.

From Barb: "I thought these two pictures were a pleasant reminder of Spring. Hard to believe that what is now beautiful gardens was once a limestone quarry. We were told that Jennie Butchart would be lowered into the quarry in a basket by the men of the quarry and she would spend a good part of the day planting flowers. These gardens are the end result. If you ever get an opportunity to visit the gardens, they are amazing." You can see other pictures at:

www.butchartgardens.com/ Click on the Menu to see the gardens at their best.



VOLC BOARD OF DIRECTORS

May 2020 - May 2021

President, Mary Ohara

Vice-President, Eric Dean

Vice-President , Patti Abernethy

Treasurer, Ray Krout

Corresponding Secretary, Mike Ostroski

Recording Secretary, Barbara Lawrence

Loretta Fitch, At-Large

Ken Riley, At-Large

COMMITTEES

Grounds Committee

Patti Abernethy

Steve Brubaker

Don Doto

Lois Inglisa

Linda Trach

Beatification Subcommittee

Mim Krout, Chair

Susan Brubaker

Christine Killian

Ruth Leaming

Linda Trach

Cheryl Werner

Clubhouse Garden Club

Don Doto

Eric Dean, Board Liaison

Communications Committee

Cheryl Werner, Chair

Steve Brubaker

Sharon Dickol

Barb Doto

Mary Legreid

Mary Ohara

Mike Ostroski, Board Liaison

Clubhouse/Activities Committee

Mary Legreid, Co-chair

Wanda Search, Co-chair

Mary Ohara, Treasurer

Cheryl Werner, Librarian

Cheryl Ford, Activities

Nancy Halbedl, Activities

Christine Killian, Activities

JoanMarie Powers, Activities

Janet Sanders, Activities

Jean Skelly, Activities

Special Events Sub-Committee

Cheryl Werner, Chair

Mary Legreid

Wanda Search

Maria Tricarico

Loretta Fitch, Board Liaison

Welcoming Committee

Barb Doto, Chair

Susan Brubaker

Monica Chan

Loretta Fitch

Martyanne Grabusky

Odette Haight

Ruth Leaming

Cindy Lewis

Sharon Mutschler

JoanMarie Powers

Tom Skelly

Patti Abernethy, Board Liaison

Architectural Review Committee

Tom Skelly, Chair

Carolyn Aresu

Marion Bowman

Odette Haight

Mary Legreid

Nancy Weldin

Ken Riley, Board Liaison

Contact information can be found on the VOLC website

<https://www.myvolc.org/>



The VOLC Clubhouse remains closed.

This publication is written by and for the residents of the Village of Long Creek.

Contact Cheryl Werner, Editor, with suggestions or comments.

302-834-1473 or cherylwerner@verizon.net

VOLC – GRASS CLASS March 2021
READ & RETAIN FOR FUTURE REFERENCE

The following information describes the VOLC Lawn Care Program for the 2021 season. BrightView (BV) is providing these services again this year. Grass Class may be updated during the year. **Planned Mow Day is TBD.**

Services for lots are listed here. A sign should be posted at the entrance for pruning/trimming & treatments.

Mowing	Weekly (with exceptions for heat, rain)	25x/year (5 additional, as needed)
Edging walkway/sidewalk	Twice Monthly	12 +/- per year
Weeding of Builder Beds	Once a month, starting in May	6+/- per year
Treatments - Fertilizer and/or weed control, grub control	6 Treatments Seasonal. 3rd Treatment in early summer includes grub control	6x / year
Spring Cleanup & Mulching	March	1x / year
Prune/Trim Flowering & Evergreen Shrubs & Flowering Trees at proper time	Summer and November	2x / year

Red flags talk to our workers. **Red/Orange/Pink flags are all considered Red at VOLC and are in a basket on the front porch of the clubhouse.** If the basket needs flags leave a message or text on 302-598-4891.

Residents may choose to decline services for given events as follows:

- If you **DO NOT WANT** a **SPECIFIC AREA MOWED** (wet or other reason), place multiple **RED** flags around this area.
 - If you **DO NOT WANT** your **LAWN MOWED** in a given week, place **multiple (4+)** **RED** flags along both side boundaries of your property the day of service. Flags should be visible from both front and rear of your property. This shows BrightView workers where your lot side lines are.
 - If you **DO NOT WANT** your **LAWN FERTILIZED/TREATED** for a specific application, place multiple (4+) **RED** flags, visible from front and rear, along both side boundaries of your property on the day of service.
 - If you **DO NOT WANT** the **PLANTS/SHRUBS TRIMMED/PRUNED** or **CLEANED/MULCHED** in a given builder bed, place multiple (4+) **RED** flags in the mulched area throughout each beds on the day of service.
- In addition, for these events, PERSONAL (HOMEOWNER) BEDS SHALL BE FLAGGED to indicate that these beds are the responsibility of the homeowner.**

Damage needing repair from BV services should be reported in writing (with pictures) within 24 hours to IPS.

Complaints about specific lawn care for your lot or common areas should be addressed in writing (with pictures) to IPS.

IPS Contact information for damage and complaints is: IPS phone 302-994-3907, ext #2 or info@ipsde.com.

Additional Information:

Prior to any lawn treatment or pruning/trimming, a sign should be posted at the VOLC entrance a day or so before.

You should also receive email notification.

For all lawn mowing, residents are reminded that nothing is permitted on the lot grass areas except splash blocks at

the bottom of down spouts. This means that you remove flexible downspout extensions on the day of service. ☺

The normal mow day of week is TO BE DETERMINED. Residents are reminded to NOT WATER their lawns the day of the lawn mowing. You will be notified if the normal mow day of the week is delayed or changed.

VOLC Grass Volunteers - for questions & input about our lawns, open spaces, and our contract with BV.

VOLC Board - Liaison for Grounds

Eric Dean (#47) 302-585-6003 (c) delawaredeans@gmail.com

Volunteer - Basins & Storm Water Management

Stephen Rapp (#123) 862-221-0646(c) stephenjrapp@yahoo.com

Volunteer - Grass, Backup for Open Space and Basins

Steve Brubaker (#32) 302-598-4891 (c) volc.rocks@gmail.com

Volunteer - Open Space, Backup for Grass

Bob Learning (#93) 302-500-2582(c) bleam@aol.com

Neighbors

The weather turned cold in January and Bear **Skelly** needed a sweater. Neighbor, Sue Bifano, came to the rescue, knitting a little blue beauty. Bear was mighty proud of his new sweater and was nice and warm as he watched the snow fall.



For Valentine's Day, Sue made him a red one, giving him the perfect outfit for delivering Girl Scout cookies.

Bear also wore it to the nail salon. He loved it there, but had a hard time picking a nail color!



cute stuff!



Ambitious VOLC residents got out in the February snow and built snow people.

At left - The **Getty Two**.

Above - **Janet and Stan Sanders'** grandson, David, built this one at his grandparents' home.



The snowman birdfeeder at **Carol and Donnie Thompson's** home got lots of hungry guests!



Below - Snow didn't keep goldfinches from the thistle feeder at the **Werner** home.



Snow day! - **Donnie Thompson** helped his grandchildren, Ava, Noah, and Colin build a snowman.





Congratulations!

Loretta Dougherty’s daughter, Shannon, an attorney with the bankruptcy and restructuring group at McCarter & English LLP, was honored by the Delaware Business Times in October, 2020. Shannon was cited as one of “Delaware’s best and brightest young professionals, making a difference with their intelligence, initiative, and innovation.”

Shannon two young daughters - four year old Charlotte and baby Abby - are shown at right.

Congratulations, Shannon, and proud Mama, Loretta!



Tough living? - Patti Abernethy’s cats, Gigi and Tony rest after a big breakfast.

Looking for more puzzles or brain food during these at-home days? Several neighbors have been working on the NYT Spelling Bee. The puzzle is published every day and is available online for those without a subscription.

<https://nytimes-spellingbee.com>

You’re given 7 letters with one in the center which must be used in every word. Barb Doto says that while she can’t enter her words online without subscribing, she can rotate the letters.

Try it! Be careful though. It can be addictive.



Irish Fun



Maybe next year?





Tell us - What do you love?

Debora Johnson - Going to Atlantic City with my husband!

Jean Skelly - Potatoes - any way you can make them!

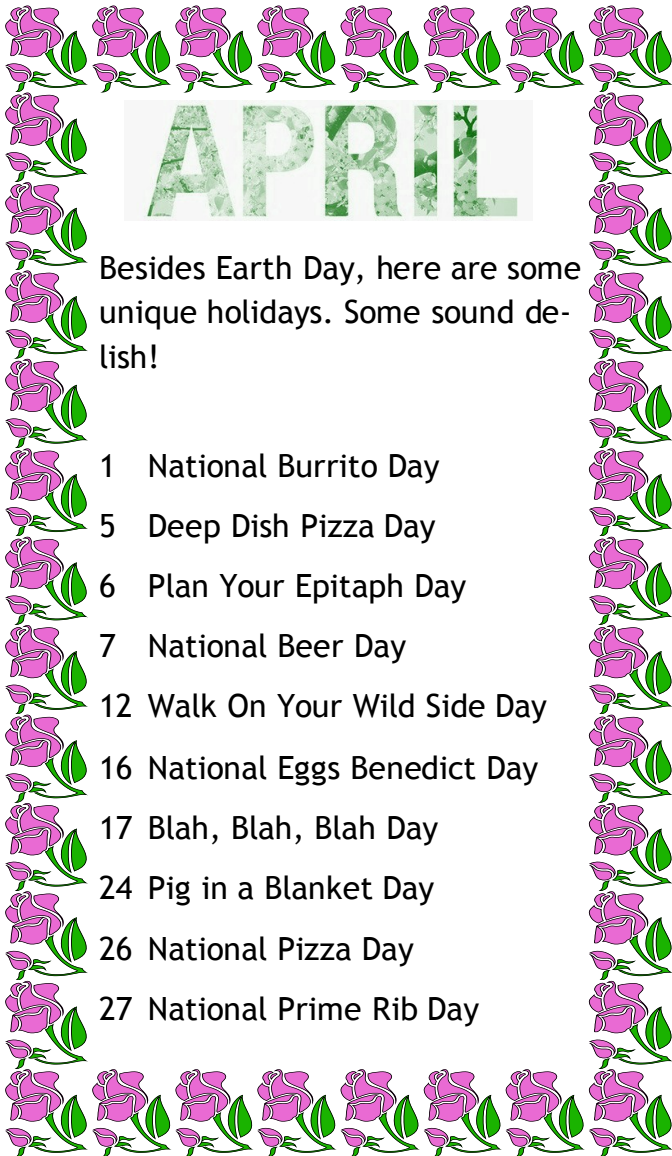
Mary Legreid - I can confirm that pizza and brownies have remained at the top of my list of favorite foods!



March

Besides St. Patrick's Day, here are some other March holidays you might want to celebrate...

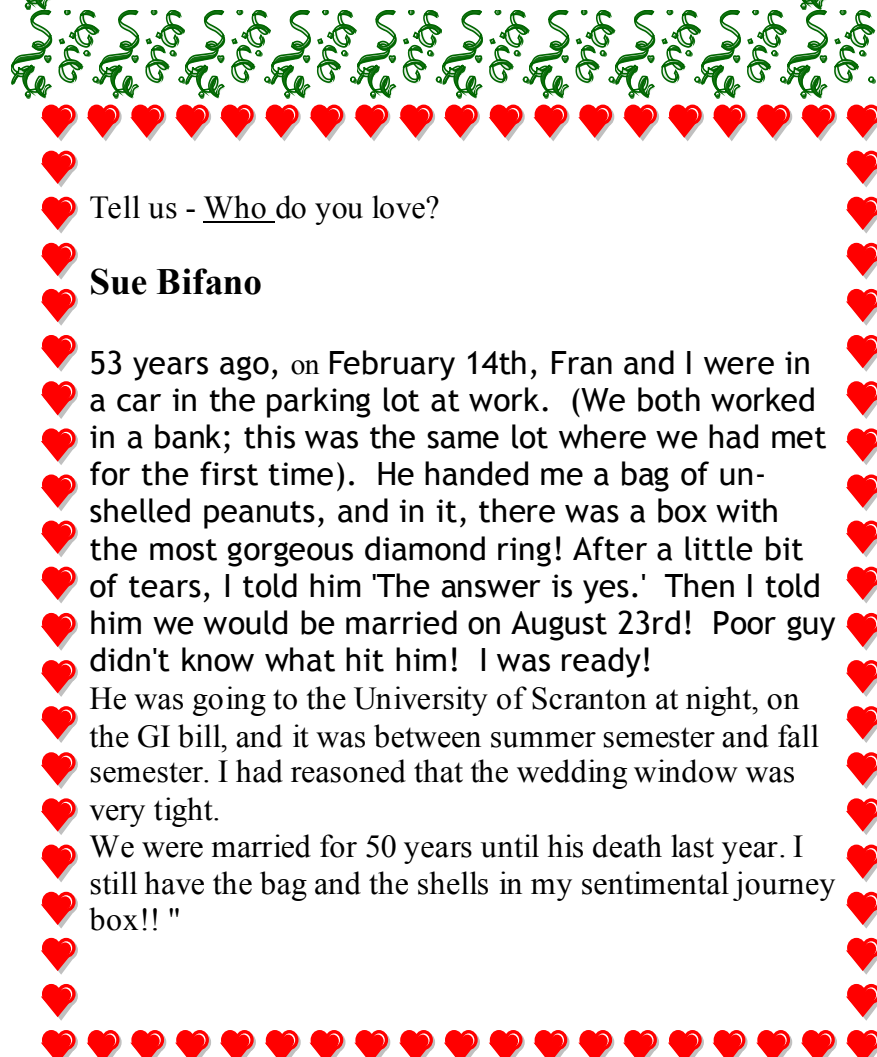
- 1 Peanut Butter Lover's Day
- 2 Old Stuff Day
- 14 National Potato Chip Day
- 22 National Goof-off Day
- 23 National Chip & Dip Day
- 24 National Chocolate Covered Raisins Day
- 25 Waffle Day
- 26 Make your Own Holiday Day
- 28 Something on a Stick Day
- 30 I Am In Control Day!



APRIL

Besides Earth Day, here are some unique holidays. Some sound delicious!

- 1 National Burrito Day
- 5 Deep Dish Pizza Day
- 6 Plan Your Epitaph Day
- 7 National Beer Day
- 12 Walk On Your Wild Side Day
- 16 National Eggs Benedict Day
- 17 Blah, Blah, Blah Day
- 24 Pig in a Blanket Day
- 26 National Pizza Day
- 27 National Prime Rib Day



Tell us - Who do you love?



Sue Bifano



53 years ago, on February 14th, Fran and I were in a car in the parking lot at work. (We both worked in a bank; this was the same lot where we had met for the first time). He handed me a bag of unshelled peanuts, and in it, there was a box with the most gorgeous diamond ring! After a little bit of tears, I told him 'The answer is yes.' Then I told him we would be married on August 23rd! Poor guy didn't know what hit him! I was ready!

He was going to the University of Scranton at night, on the GI bill, and it was between summer semester and fall semester. I had reasoned that the wedding window was very tight.

We were married for 50 years until his death last year. I still have the bag and the shells in my sentimental journey box!! "



PUNNY STUFF

The heaviest knight at King Arthur's round table was Sir Cumference. He acquired his size from too much pi.

I thought I saw an eye-doctor on an Alaskan island, but it turned out to be an optical Aleutian.

She was only a whisky-maker, but he loved her still.

A rubber-band pistol was confiscated from an algebra class, because it was a weapon of math disruption.



No matter how much you push the envelope, it'll still be stationery.

A dog gave birth to puppies near the road and was cited for littering.

A grenade thrown into a kitchen in France would result in Linoleum Blownapart.

Two silk worms had a race. They ended up in a tie.

A hole has been found in the nudist-camp wall. The police are looking into it.

Time flies like an arrow. Fruit flies like a banana.

Atheism is a non-prophet organization.

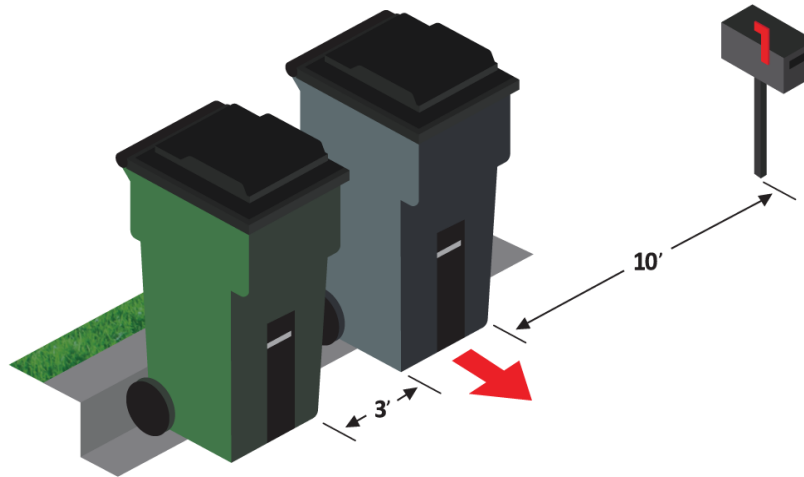
Two hats were hanging on a hat rack in the hallway. One hat said to the other: 'You stay here; I'll go on a head.'

I wondered why the baseball kept getting bigger. Then it hit me.

The size 2 fortune-teller who escaped from prison was a small medium at large.

Waste Industries/GFL Trash Service Information (Adapted from their website)

Container placement is essential to **Automated Side Loading**. Please remember we don't want to damage your property, so be sure to keep your container as far **away as possible from any property that could be damaged**.



- Mail Boxes
- Vehicles
- Street Lights
- Electrical Posts

The container opening must be facing onto the street with the handles and wheels facing your home. Carts should be placed at the curb the night before your pick-up day.

Here are some quick pointers for all of your trash and recycling pick-up needs:

- Only trash contained within the cart will be collected.
- To ensure collection, please roll your cart(s) out the night before your scheduled day of service.
- Holidays are subject to change and we encourage you to view our [holidays page](#), if you have any questions. Excluded items that should never be put in the cart include: construction and demolition debris, hazardous waste, tires, paint, batteries, and dead animals.

If you have any questions or concerns, please let us know by using the [contact us](#). Thank you for being a Waste Industries customer, and we look forward to serving your community!

CURBSIDE RECYCLING GUIDELINES



Newspaper
Remove bags, strings
and rubber bands



Cardboard & Paper Bags
Flatten cardboard & cut into
pieces. No wax coated cardboard



Magazines & Catalogs
Any size magazine



Junk Mail
Envelopes, flyers, brochures,
postcards etc.



Office Paper
All types and sizes



Phone Books
All types and sizes



Paperboard
No wax coated paperboard

YES

- Clean pizza boxes
- Clean garden plastics
- Flatten cardboard boxes
- Empty and rinse containers
- Leave caps on plastic bottles
- OK to leave staples, clips, labels, stamps, spiral bindings and metal fasteners on paper products



***Plastic Jugs/Bottles**
(#1 & #2)



***Household Plastic**
(#3-#7)
Empty containers only



Paper Milk or Juice
Cartons
Empty cartons only



Pots & Pans
Kitchen cookware



***Aluminum Cans**
Empty cans only



***Steel & Tin**
Cans
Empty cans
only



***Clear and Colored**
Glass
Empty containers
only

NO

- Plastic bags
- Foam containers or products (Styrofoam)
- Wire hangers
- Window panes, mirrors, ceramics & Pyrex dishware
- Organic material and food waste
- Electronic waste (batteries, cell phones, computers, etc.)
- Paint, pesticides, oil & cleaners
- Waxed cardboard
- Needles or syringes
- Hazardous waste





7800 Farrow Road | Columbia, SC 29203 | 803.935.0249

YOUR 2021 RECYCLING COLLECTION SCHEDULE

Thank you for being a GFL Environmental customer! We wanted to provide you with an annual collection schedule for the 2021 year. The calendar below is marked with your area's collection dates. You'll notice that if your collection falls on a holiday, pickup will occur on the following day.

We would also like to reassure you that the safety of our customers, their families, and our employees remains our number one priority. In the event of inclement weather, your schedule may be altered. You can track inclement weather alerts online at <https://wasteindustries.com/inclementweatheralert>

The Following Holidays May Affect Your Service Date:

- January 1st - New Year's Day
- July 4th - Independence Day
- November 25th - Thanksgiving Day
- December 25th - Christmas Day

*Please contact GFL Environmental with any questions you may have.

We are on the B or Blue schedule below.

= A Week = B Week = Holiday

For pickup on or following a holiday, your collection may be delayed by one day.

JANUARY							FEBRUARY							MARCH							APRIL							MAY							JUNE						
S	M	T	W	T	F	S	S	M	T	W	T	F	S	S	M	T	W	T	F	S	S	M	T	W	T	F	S	S	M	T	W	T	F	S	S	M	T	W	T	F	S
					1	2		1	2	3	4	5	6		1	2	3	4	5	6				1	2	3						1			1	2	3	4	5		
3	4	5	6	7	8	9	7	8	9	10	11	12	13	7	8	9	10	11	12	13	4	5	6	7	8	9	10	2	3	4	5	6	7	8	6	7	8	9	10	11	12
10	11	12	13	14	15	16	14	15	16	17	18	19	20	14	15	16	17	18	19	20	11	12	13	14	15	16	17	9	10	11	12	13	14	15	13	14	15	16	17	18	19
17	18	19	20	21	22	23	21	22	23	24	25	26	27	21	22	23	24	25	26	27	18	19	20	21	22	23	24	16	17	18	19	20	21	22	20	21	22	23	24	25	26
24	25	26	27	28	29	30	28							28	29	30	31				25	26	27	28	29	30	23	24	25	26	27	28	29	27	28	29	30				
31																												30	31												

JULY							AUGUST							SEPTEMBER							OCTOBER							NOVEMBER							DECEMBER						
S	M	T	W	T	F	S	S	M	T	W	T	F	S	S	M	T	W	T	F	S	S	M	T	W	T	F	S	S	M	T	W	T	F	S	S	M	T	W	T	F	S
				1	2	3	1	2	3	4	5	6	7			1	2	3	4				1	2		1	2	3	4	5	6				1	2	3	4			
4	5	6	7	8	9	10	8	9	10	11	12	13	14	5	6	7	8	9	10	11	3	4	5	6	7	8	9	7	8	9	10	11	12	13	5	6	7	8	9	10	11
11	12	13	14	15	16	17	15	16	17	18	19	20	21	12	13	14	15	16	17	18	10	11	12	13	14	15	16	14	15	16	17	18	19	20	12	13	14	15	16	17	18
18	19	20	21	22	23	24	22	23	24	25	26	27	28	19	20	21	22	23	24	25	17	18	19	20	21	22	23	21	22	23	24	25	26	27	19	20	21	22	23	24	25
25	26	27	28	29	30	31	29	30	31					26	27	28	29	30			24	25	26	27	28	29	30	28	29	30					26	27	28	29	30	31	
																					31																				

clever

Submitted by Mary Legreid

1. When one door closes and another door opens, you are probably in prison.
2. To me, "drink responsibly" means don't spill it.
3. Age 60 might be the new 40, but 9:00 pm is the new midnight.
4. It's the start of a brand new day, and I'm off like a herd of turtles.
5. The older I get, the earlier it gets late.
7. I remember being able to get up without making sound effects.
8. I had my patience tested. I'm negative.
9. Remember, if you lose a sock in the dryer, it comes back as a Tupperware lid that doesn't fit any of your containers.
10. If you're sitting in public and a stranger takes the seat next to you, just stare straight ahead and say, "Did you bring the money?"
11. When you ask me what I am doing today, and I say "nothing," it does not mean I am free. It means I am doing nothing.
12. I finally got eight hours of sleep. It took me three days, but whatever.
13. I run like the winded.
14. I hate when a couple argues in public; I missed the beginning and don't know whose side I'm on.
15. When someone asks what I did over the weekend, I squint and ask, "Why, what did you hear?"
16. When you do squats, are your knees supposed to sound like a goat chewing on an aluminum can stuffed with celery?
17. I don't mean to interrupt people. I just randomly remember things and get really excited.
18. When I ask for directions, please don't use words like "east."





March

Ray Whiteoak	8th
Bob Dickol	10th
Steve Brubaker	20th
Stephano Medio	21st
Monica Chan	23rd
Charlie Pinchot	24th
Rossana Palermo	26th
Donnie Thompson	28th



April

Joan Holstein	5th
Bob Leaming	6th
Patti Abernethy	7th
Ray Search	9th
Marilyn Abrams	9th
Pam Smith	9th
Carolyn Aresu	10th
Mary Legreid	10th
Linda Trach	15th
Joan Rowland	16th
Paul Wellborn	17th
Don Hobson	18th
Sonja Lemanski	18th
MT Lednum	24th
Carol Thompson	26th
Barbara Lawrence	27th
Bonnie Anderson	28th
Steve Rapp	29th



Wisdom

Submitted by Marilyn Abrams

While explaining stress management to an attentive audience, a young woman confidently walked around the room with displaying a glass of water. Everyone knew she was going to ask the ultimate question, 'half empty or half full?' She fooled them all "How heavy is this glass of water?" she inquired with a smile. Answers called out ranged from 8 oz. to 20 oz.

She replied, "The absolute weight doesn't matter. It depends on how long I hold it. If I hold it for a minute, it's not a problem. If I hold it for an hour, I'll have an ache in my right arm.

If I hold it for a day, you'll have to call an ambulance! In each case it's the same weight, but the longer I hold it, the heavier it becomes." She continued, "and that's the way it is with stress. If we carry our burdens all the time, sooner or later, as the burden becomes increasingly heavy, we won't be able to carry on. As with the glass of water, you have to put it down for a while and rest before holding it again. When we're refreshed, we can carry on with the burden"

So, as early in the evening as you can, put all your burdens down. Don't carry them through the evening and into the night.

- 1 Accept the fact that some days you're the pigeon and some days you're the statue!
- 2 Always keep your words soft and sweet just in case you have to eat them
- 3 Always read stuff that will make you look good if you die in the middle of it.
- 4 Drive carefully... It's not only cars that can be recalled by their Maker.
- 5 If you can't be kind, at least have the decency to be vague.
- 6 If you lend someone \$20 and never see that person again, it was probably worth it.
- 7 It may be that your sole purpose in life is simply to serve as a warning to others.
- 8 Never buy a car you can't push.
- 9 Never put both feet in your mouth at the same time, because then you won't have a leg to stand on.
- 10 Nobody cares if you can't dance well. Just get up and dance.
- 11 Since it's the early worm that gets eaten by the bird, sleep late.
- 12 The second mouse gets the cheese.
- 13 When everything's coming your way, you're in the wrong lane.
- 14 Birthdays are good for you. The more you have, the longer you live.
- 15 Some mistakes are too much fun to make only once.
- 16 We could learn a lot from crayons. Some are sharp, some are pretty and some are dull. Some have weird names and all are different colors, but they all have to live in the same box.
- 17 A truly happy person is one who can enjoy the scenery on a detour.
- 18 AND - Save the earth..... It's the only planet with chocolate!





March is Women's History Month

1. Who was known as the 'Angel of the Battlefield' because of her work as a nurse during the Civil War?

- Lucy Stone
- Carrie Nation
- Dorothea Dix
- Clara Barton

2. What year did American women gain the right to vote?

- 1848
- 1920
- 1896
- 1945



3. Where and when was the first Women's Rights Convention held in the United States?

- Seneca Falls, NY, 1848
- Philadelphia, PA, 1776
- New York City, 1900
- Woodstock, NY 1970

4. Who was the first woman to graduate from medical school in the United States?

- Anna Howard Shaw
- Jane Addams
- Margaret Sanger
- Elizabeth Blackwell

5. Some 19th-century doctors thought that education was hazardous to women's health.

- True
- False

Answers this page: 1. Clara Barton 2. 1920
3. Seneca Falls, NY, 1848 4. Elizabeth Blackwell
5. True

6. This 19th-century feminist designed a new style of clothing for women. The style never became popular, but her name entered the American language as a term for a specific type of garment.

- Elizabeth Weskit
- Amelia Bloomer
- Marie Corset
- Anna Henley

7. In the 1920s, young women scandalized their elders by shortening their skirts, bobbing their hair, wearing make-up, and dancing the Charleston with men whom they hardly knew. What were these young women called?

- lulus
- flappers
- women's libbers
- Gibson girls

8. Which 1920s movie star was known as the 'It' girl?

- Mary Pickford
- Mae West
- Tallulah Bankhead
- Clara Bow



9. Who made her fortune by developing a successful line of cosmetics for African American women in the early 1900s?

- Ida B. Wells
- Josephine Baker
- Sojourner Truth
- Madam C. J. Walker

10. Who was the first woman to be the vice-presidential nominee of a major political party?

- Eleanor Roosevelt
- Margaret Chase Smith
- Elizabeth Dole
- Geraldine Ferraro

Answers this page: 6. Amelia Bloomer 7. flappers 8. Clara Bow 9. Madam C.J. Walker 10 Geraldine Ferraro.



The VOLC Movie Awards

From Susan Brubaker

Best movie - The Greatest Showman

Favorite actor - Hugh Jackman

"Music, dance, drama and message all wrapped up in entertainment. Could watch it over and over. And we BOTH loved it."



From Jean Skelly

"I see a lot of movies; have seen 5 this year too. It's hard for me to chose a favorite movie because they are all so different. But I'm going to give it a try.

Titanic and Gone With The Wind - I could watch them over and over, but there is also The American President, which again I could watch again and again. There are a few more that touched my heart or made me laugh or were historical that I loved. Hard to choose.

Tom Hanks - favorite actor - I will go see any movie that he stars in. I've only found one that I didn't like, but most were outstanding.

Meryl Streep - favorite actress, same reasons as Tom, but there is not one that I didn't like."



From Bob Greenblatt

Denzel Washington / Crimson Tide - mutiny aboard a U.S. nuclear submarine!



From Debora Johnson

Russell Crow

Kevin Costner

J Lo

Alec Baldwin

Denzel Washington

Jennifer Aniston

Julia Roberts

Sandra Bullock

Michael Douglas

Favorite Movies:

Stepmom *Julia Roberts*

It's complicated *with Alec Baldwin (so funny)*

The Blindside *Sandra Bullock*



From Stan Sanders

Denzel Washington (actor)

Elizabeth Taylor (actress)

Chariots of Fire (movie)

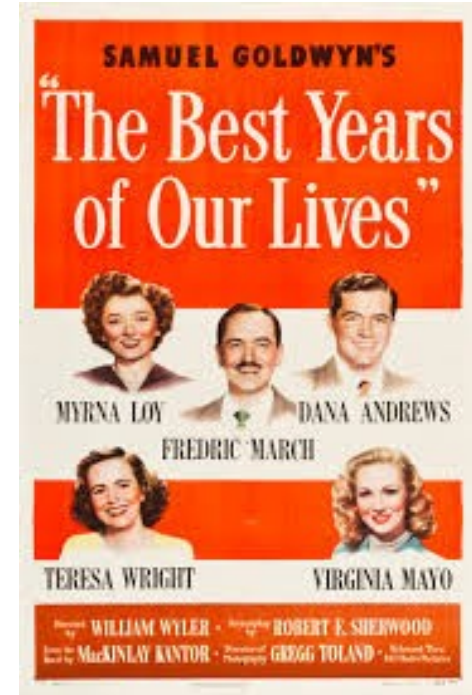


From Tom Skelly

"Favorite actor/actress of all time? - from different periods of my life - Anthony Quinn as Barabbas, Charlton Heston as Ben-Hur and Moses, Kirk Douglas as Spartacus. Then, there were the middle years - Peter O'Toole as Lawrence of Arabia, Barbara Streisand as Katie, Robert Redford as Hubble, Paul Newman as Butch, Redford & Newman as Johnnie Hooker & Henry Gondorff, George C. Scott as Patton. And the later years - Tom Hanks as Captain Miller and Chuck Noland, Leonardo DiCaprio as Jack Dawson, Rami Malik as Freddie Mercury, Taron Egerton as Elton John in Rocketman.

But - Favorites of all time? Tom Hanks and Meryl Streep

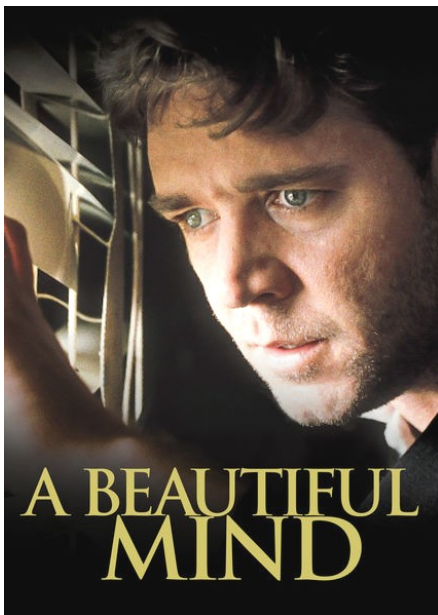
My favorite movie of all time is... 'The Best Years of Our Lives' - Even before I was a veteran, this movie made a lifetime impression on me. It's about returning veterans from WWII and the difficult adjustments they had to make when they came home from war - Fredrick March, Dana Andrews, Myrna Loy, and Harold Russell (a paraplegic whom I met in 1971) - I guess it was because my father returned home in late 1945 after being drafted in 1942 and serving as a combat infantryman in Europe."



From Nancy Halbedl

My favorite movie of all time is A Beautiful Mind (2001) which is based on a biography of John Nash, a mathematics professor at Princeton and winner of a Nobel Prize for his theory in economics. It won Best Picture, Best Actor (Russell Crowe), Best Supporting Actress (Jennifer Connelly), Best Director (Ron Howard) and Best adapted screenplay. The movie takes you into the mind of a schizophrenic so you don't know which events are real or imagined until the end of the movie. This was the only movie that I watched three times for details as to what I may have missed.

My favorite actress is Susan Sarandon who has been nominated for 5 academy awards as best actress and won for her role in Dead Man Walking. However, my favorite movie where she was nominated as best actress was Lorenzo's Oil (1993). This is the true story of a young boy diagnosed with ALD, a disease which affects one in 21,000 boys who lack one of the X chromosomes so they can't manufacture a protein to break down the fatty acids. When there was no treatment, Susan Sarandon (mom) and Nick Norte (dad) devote all their time contacting scientists, doctors, families affected with the disease around the world and doing extensive research to develop a treatment which slows the progression of the disease. Their discovery is Lorenzo's Oil which is used today as a treatment and costs about \$200 a bottle.



March may mean basketball to many, but to many others, it also means quilting. **Nancy Weldin** sent along this notice of a quilt show, featuring Mary Anne Fontana, at The Gibby in Middletown, a theater she has long championed. Below is the info from the artist.

QUILT EXHIBIT

I have been invited to be the featured artist during the month of March, National Quilt Month, at The Gibby (Gilbert W. Perry Center for the Arts) in Middletown, DE
PLEASE STOP BY!

The exhibit:	Fiber Art, to Stitch or not to Stitch Featuring the works of Mary Anne Fontana	
Exhibit Dates:	March 4 -27, 2021	
Opening Reception:	March 12th 6:00 PM—8:00 PM	
Where:	The Gibby—The Gilbert W. Perry Center for the Arts 51 West Main Street, Middletown, DE 19079 302-378-2932	
Gallery Hours:	Thursdays & Fridays	12:00-5:00 PM
	Saturdays	10:00 AM—5:00 PM

About me: I like to think of myself as a Quilt & Textile Artist. Been sewing since I was 8 years old. It is my happy place :) Part time national AccuQuilt educator and just self-published my first book of quilt patterns. As an avid photographer some of my images show up in my work in unexpected ways. I plan to be at the gallery every Friday during the exhibit :) Hope you will stop by!



Mary Anne Fontana maintains a website -

<https://www.fontanaoriginals.com/>

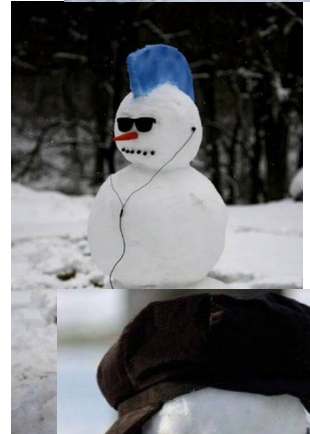
Can be seen in YouTube videos,

On Facebook,

And in shops on Etsy and Spoonflower.



TRY THESE!



COMING SOON!

More opportunities for culture! While we're mostly staying at home, area museums and attractions are using this pandemic downtime to make long-hoped-for renovations, reinstallations, or reorganizations. Check closures and schedules on their websites.

The Delaware Museum of Natural History is currently closed, with plans to reopen in early 2022 as The Delaware Museum of Nature and Science. Meanwhile, museum collections are available for research online. <https://www.delmnh.org/collections-research/>

The Hagley Museum and grounds is currently closed due to an electrical project, but hopes to open in mid-March.

<https://www.hagley.org/>



The Brandywine River Museum is closed through June for renovation, but has extensive virtual tours and curator-led gallery talks online.

<https://www.brandywine.org/brandywine-home>

The Delaware Art Museum is open Wed - Sun <https://delart.org/>

Winterthur Museum remains open on weekends for self-guided tours and they also offer several virtual programs.

<https://www.winterthur.org/exhibitions-events/events/winter-at-winterthur/>

Longwood Gardens Reimagined - The popular attraction plans a \$250 million expansion to both the conservatory and grounds. The project covers seventeen acres, and some of the new sections are expected to be open for the holiday '21 display. The Main and East Conservatories will remain open during the work.

<https://longwoodgardens.org/>

